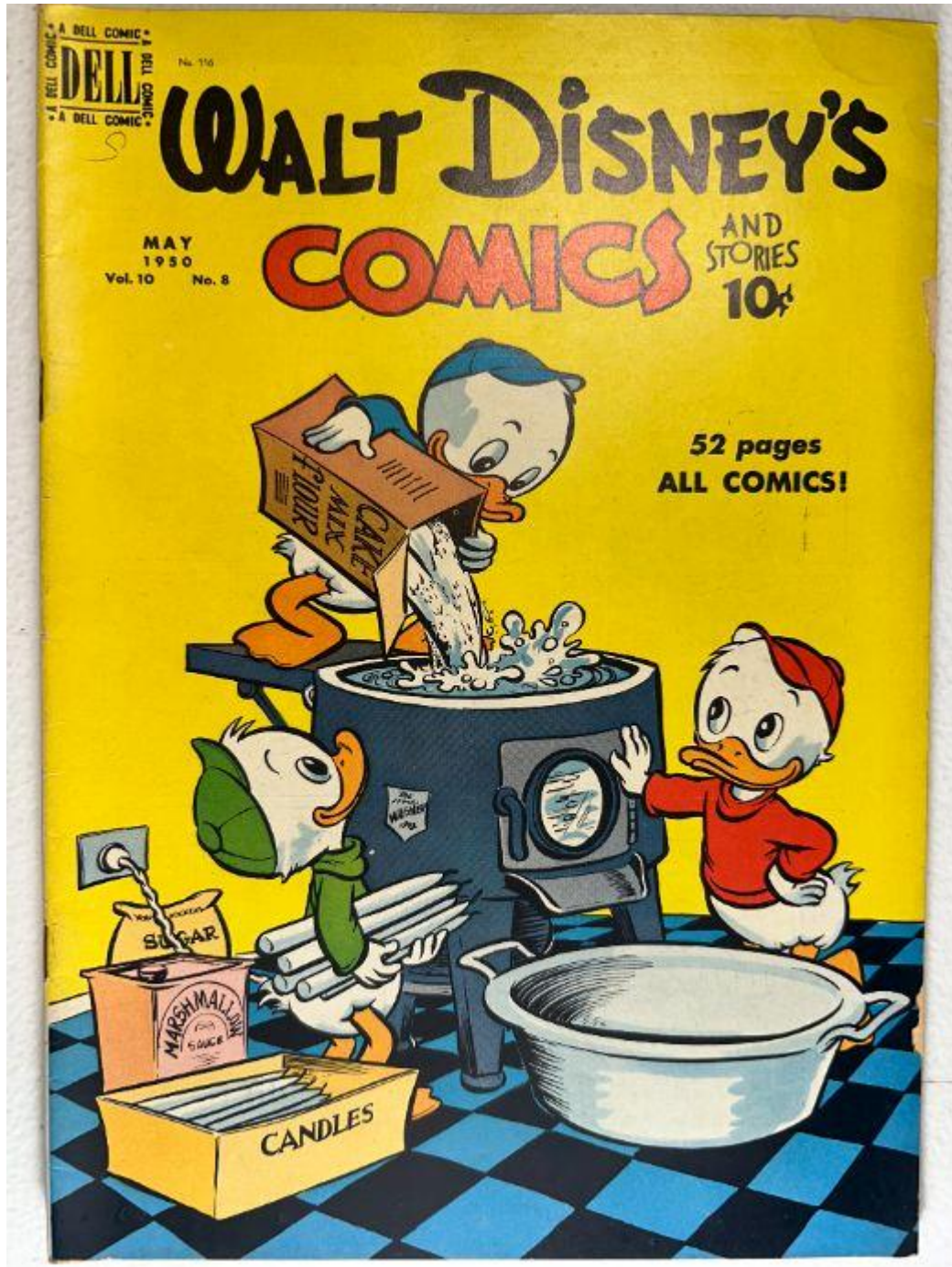


■ **Walt Disney's Comics and Stories – Vol. 10 No. 8**
(May 1950)

Evaluation Date: April 5, 2026



SUMMARY OF OBSERVATIONS

This copy presents with **strong overall visual appeal and excellent cover color**, but detailed inspection reveals **multiple discrete, material condition issues** that must be enumerated individually.

Documented observations include:

- **Localized paper cracking and splitting at the spine**, most pronounced at the center and lower staple locations, visible as horizontal fissures along the spine fold.
- **Visible staple stress**, with the lower staple showing clearer surrounding paper deformation than the upper staple.
- **Edge and corner wear**, including moderate rounding at lower cover corners.
- **Interior page toning**, consistent across pages, with darker margins than centers.
- **Minor interior page edge waviness**, without full-thickness tears.

No detached pages, no missing interior pages, and no moisture staining are visible in the provided images. The book has strong color and attractive presentation.

FRONT COVER — OBSERVATIONS

Walt Disney's Comics and Stories – Vol. 10 No. 8 (May 1950)

Photo Condition & Quality:

High-resolution image with even lighting. Full cover surface, edges, corners, spine, and lower margin are clearly visible.

Observations:

- Bright yellow background retains **strong, even color saturation** across the entire cover surface.
- Black title lettering and character outlines remain sharp with no visible ink fading.
- Along the **spine fold**, there is **distinct paper cracking** visible as multiple short horizontal separations in the cover paper, extending across the fold line.
- At approximately the **mid-spine**, paper shows **splitting at the fold**, exposing lighter interior fibers.
- The **lower spine area**, near the bottom staple, shows **more pronounced cracking and slight separation**, with the fold visibly weakened.
- Lower edge of the front cover shows **light friction wear**, with softened edge definition but no large paper loss.

- Corners:
 - Lower corners show **moderate rounding** with softened profile.
 - Upper corners remain sharper with only light rounding.
- No writing, stamps, or markings observed.

Overall Impression:

Front cover exhibits excellent color but has **structural spine-fold cracking that materially affects condition.**

BACK COVER — OBSERVATIONS

Walt Disney's Comics and Stories – Vol. 10 No. 8 (May 1950)

Photo Condition & Quality:

Evenly lit image showing full back cover, edges, and corners.

Observations:

- Back cover paper tone is **uniform tan/cream**, slightly darker than interior pages.
- Spine area mirrors the front cover with **visible cracking along the fold**, particularly at the center.
- No moisture stains, tide lines, or blotching observed.
- Light edge wear present along the bottom edge.
- Corners show **consistent rounding**, most noticeable at lower corners.
- Subscription advertisement graphics remain intact and legible.

Overall Impression:

Back cover condition is stable, with **spine cracking and general age wear.**

THE TOPS IN COMIC ENTERTAINMENT

SUBSCRIBE NOW!



Don't Miss These Exciting Adventurous Stories

A clean wholesome comic approved by parents and educators everywhere

FREE!

Full color pictures of your favorite characters given with subscriptions

to **WALT DISNEY'S** AND **COMICS** **STORIES**

5-year subscription—\$4.00
(6 Free Pin-Ups)

2-year subscription—\$1.75
(2 Free Pin-Ups)

3-year subscription—\$2.50
(4 Free Pin-Ups)

1-year subscription—\$1.00
(1 Free Pin-Up)

DEPT. 5 **Mail to: K. K. PUBLICATIONS, Inc.**
POUGHKEEPSIE, NEW YORK

Gentlemen:

Enclosed find \$_____ for which please enter the following subscription to **Walt Disney's Comics and Stories** for _____ monthly issues beginning with _____ issue. Check here if this is a new subscription.

Please print

Name _____

Street and Number _____

City _____ Mailing Dist. No. _____ State _____

Donor's Name _____

Address _____

**PRINT NAME
AND ADDRESS
PLAINLY**



INSIDE FRONT COVER — OBSERVATIONS

Walt Disney's Comics and Stories – Vol. 10 No. 8 (May 1950)

Photo Condition & Quality:

Clear, straight-on image with full margins and hinge visible.



Observations:

- Paper color is **lighter cream**, consistent with interior stock.
- No writing, stamps, or subscription marks observed.
- Hinge area shows **light stress**, but no full tearing.
- **Indicia is present and legible**, confirming: *Walt Disney's Comics and Stories, Vol. 10 No. 8, May 1950.*

Overall Impression:

Inside front cover is clean with **minor hinge stress only**.

INTERIOR PAGES — OBSERVATIONS

Walt Disney's Comics and Stories – Vol. 10 No. 8 (May 1950)

Photo Condition & Quality:

Multiple interior pages photographed clearly, with margins, panels, and gutters visible.





Page Color: cream to light tan

Observations:

- Pages show **uniform age-related toning**, darker near outer margins.
- Color artwork remains vivid and well printed.
- Several pages exhibit **minor edge waviness**, appearing as gentle undulation rather than creasing.
- Page corners show **light softening**, with no missing pieces.
- No full-thickness tears, no clipped corners, and no writing observed.
- Gutters remain intact without splitting.

Overall Impression:

Interior pages are **complete and readable**, with light age-consistent wear.

CENTERFOLD — OBSERVATIONS

Walt Disney's Comics and Stories – Vol. 10 No. 8 (May 1950)

Photo Condition & Quality:

Centerfold displayed fully open; staples and fold line visible.



Observations:

- Centerfold remains **attached at both staples**.
- Fold line shows **compression and light cracking**, more pronounced at the lower half.
- No complete detachment or tearing observed.

Overall Impression:

Centerfold is attached but shows **fold-line stress consistent with spine cracking**.

SPINE — OBSERVATIONS

Walt Disney's Comics and Stories – Vol. 10 No. 8 (May 1950)

Photo Condition & Quality:

Side-profile image clearly shows full spine length.



Observations:

- Spine shows **multiple horizontal cracks along the fold**, visible as breaks in the cover paper.
- Cracking is most prominent at the **center and lower spine areas**.
- No long vertical spine split observed.

Overall Impression:

Spine integrity is **compromised by fold cracking**, though covers remain attached.

UPPER STAPLE — OBSERVATIONS

Walt Disney's Comics and Stories – Vol. 10 No. 8 (May 1950)

Photo Condition & Quality:

Macro image clearly focused on staple and surrounding paper.



Observations:

- Upper staple is present.
- Surrounding paper shows **compression and early cracking**, but no pull-through.
- No heavy rust migration visible.

Overall Impression:

Upper staple is intact with **localized paper stress**.

LOWER STAPLE — OBSERVATIONS

Walt Disney's Comics and Stories – Vol. 10 No. 8 (May 1950)

Photo Condition & Quality:

Macro image clearly shows staple and adjacent spine area.



Observations:

- Lower staple remains embedded.
- Surrounding paper exhibits **more pronounced cracking and deformation** than the upper staple.
- Paper fibers appear weakened along the spine fold.

Overall Impression:

Lower staple is intact but surrounded by **significant fold stress**.

BRITTLINESS TEST — OBSERVATIONS

visual only

Photo Condition & Quality:

Interior page lifted clearly with adequate lighting.



Observations:

- Page bends in a rounded arc.
- No visible fiber fracture or flaking observed.

Overall Impression:

Tested page demonstrates **retained flexibility**.